

Newstar Washroom/ Bathroom & Disabled Fittings Catalogue **2010**



Hinged support rail



Vertical liquid soap dispenser



Jumbo toilet tissue dispenser



Toilet roll holder



NEWSTAR
form and function for life

Washroom Equipment

Doc M Packs and Components	W3
Soap Dispensers	W4
Tissue Dispensers	W5
Waste Receptacles	W6
Baby Change Unit/Pedal Bin	W7
Hand Dryers	W8
Paper Towel & Waste Dispenser	W9
Ash trays and cigarette bins	W10
Toilet Roll Holders	W11
Washroom Accessories	W12
Coat Hooks	W13
Washroom Apartment Accessories	W14-W15

Key to finishes

- GREY** Grey Enamelled
- PL** Plastic
- PCP** Polished Chrome Plate
- PSS** Polished Stainless Steel
- SCP** Satin Chrome Plate
- SSS** Satin Stainless Steel
- WHT** White

Key to other symbols

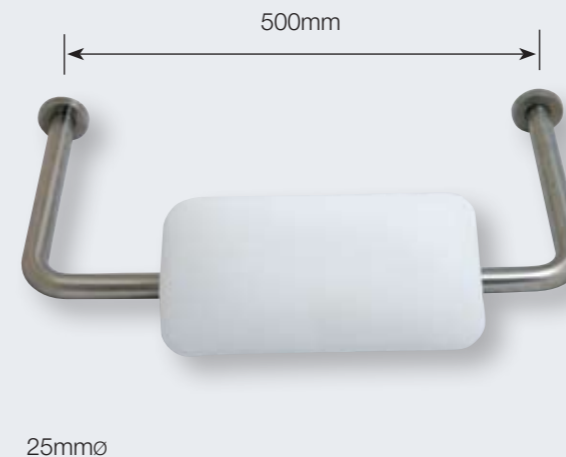
- CE** CE Marked
- EN** EN1154
- FR 30** Fire Rating
- FR 60** Fire Rating

Hinged support rail 153 **SSS**

Special design for handicapped toilet. Exposed screw mounting. Whole unit is made of heavy gauge SUS304 stainless steel with satin finish. Furnished with 32mm diameter x 753mm length swings up grab bar. A safety button designed to secure the grab bar in vertical position. Back plate 203 x 203mm.



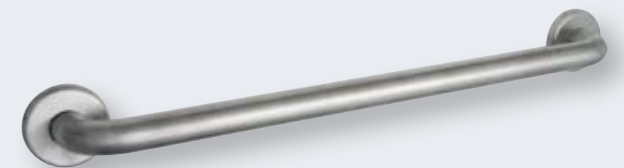
Backrest C/W cushion BR1 **SSS**



Grab bar C/W concealed rose

SGB2.32.450.SSS **SSS**
SGB2.32.600.SSS **SSS**

Concealed screw mounting. Grab bar fabricated with 1.2mm thickness of SUS304 stainless steel. Tubing to be bent and welding to the stainless steel flange with stainless steel cover, easy to snap-on. Standard Clearance : 38mm between the finished wall surface and the inner edge of the tubing.



Folding shower seat 3091C **SSS**

Constructed of 25mm diameter, SUS304 stainless steel with satin finish. Furnished with self-locking mechanism. Flange : 80mm diameter, exposed screw type. 390 x 430 x 464mm.



Soap dispensers

Vertical liquid soap dispenser 3092 **SSS**

Vertical type surface mounted with concealed mounting bracket. Container body is made of heavy gauge SUS304 stainless steel. Exposed surface with satin finish. Furnished with large locked hinged stainless steel filter top. Unbreakable refill indicator, valve has chrome plated brass cylinder and piston with stainless steel springs.

Capacity: 40 fl.oz. (1.18 litres)
205 x 125 x 110mm



Horizontal liquid soap dispenser 3094 **SSS**

Horizontal type surface mounted with concealed mounting bracket. Container body is made of heavy gauge SUS304 stainless steel. Exposed surface with satin finish. Furnished with large locked hinged stainless steel filter top. Unbreakable refill indicator, valve has chrome plated brass cylinder and piston with stainless steel springs.

Capacity: 40 fl.oz. (1.18 litres)
125 x 205 x 110mm



Budget soap dispenser 3115 **PCP** **WHT**

Surface mounted non-corroding chrome plated valve in white polyethylene container.

Capacity: 24 oz. (0.7 litre)
202 x 100 x 100mm



Tissue dispensers

Surface mounting twin toilet roll dispenser 3043 **SSS**

Whole unit is made of SUS304 stainless steel with satin finish. Tumbler lock on door. Holds and dispenses two rolls of standard toilet tissue. Upper roll automatically lowers into position only when 95% of the bottom roll has been used.

280 x 150 x 155mm



Recessed mounting twin toilet roll dispenser 3044 **SSS**

Whole unit is made of SUS304 stainless steel with satin finish. Tumbler lock on door. Holds and dispenses two rolls of standard toilet tissue. Upper roll automatically lowers into position only when 95% of the bottom roll has been used.

313 x 186 x 159mm



Jumbo toilet tissue dispenser 3047 **SSS**

Whole unit is made of of SUS304 stainless steel with satin finish. Tumbler lock.

260 x 270 x 128mm



Paper towel dispenser 3055 **SSS**

Surface mounting. Made of SUS304 stainless steel with satin finish. Unit has tumbler lock. Refill indicator slots with continuous stainless steel piano hinge. Capacity: 275 C-fold, 600 multi-fold or 400 single ply C-fold paper towels. 270 x 285 x 100mm



Waste receptacles

Free standing/wall mounted corner bin **SB-371** **SSS**

Free standing floor units made of SUS304 stainless steel with satin finish, c/w white basket inside
280 x 460 x 215mm



Towel and waste receptacle **3121** **SSS**

Free standing floor units made of SUS304 stainless steel with satin finish.
357 x 430 x 168mm



Sanitary napkin and towel receptacle **3131** **SSS**

Wall mounting unit. SUS304 stainless steel with satin finish. Cover mounted on stainless steel piano hinge. Lower trap door with self-closing lock.
279 x 235 x 108mm



Baby Change Unit/Pedal Bin

Baby change Station **131SC** **WHT**

Fabricated of high impact-plastic. The built-in dispenser for towels or sanitary liners, hooks for nappy bags and handbags plus multi-lingual instructions for added convenience.

Overall size (W/H/D):
920 x 570 x 100mm
Open (W/H/D):
920 x 570 x 520mm



Round dustbin with foot pedal **3039** **SSS**

Overall size:
210mm dia
300mm high
Material: Type 430 stainless steel.



Hand Dryers



Automatic Hand Dryer **HK-1800PA** **WHT**

(Plastic ABS cover)
Power by 220VAC
Watts: 1800W
Overall size (W/H/D):
268 x 220 x 170mm



Standard:
EN60335-1: 2002 Household and similar electrical appliances – safety.
Part 1: General requirements
EN 60335-2-23: 2003
Part 2-23 Particular requirements for appliances for skin care or hair care

Push Button Hand Dryer **HK-1800PS** **GREY**

(Enamelled steel cover)
Power by 220VAC
Watts: 2400W
Overall size (W/H/D):
248 x 248 x 202mm



Standard:
EN60335-1: 2002 Household and similar electrical appliances – safety.
Part 1: General requirements
EN 60335-2-23: 2003
Part 2-23 Particular requirements for appliances for skin care or hair care

W08

Paper Towel & Waste Disposal

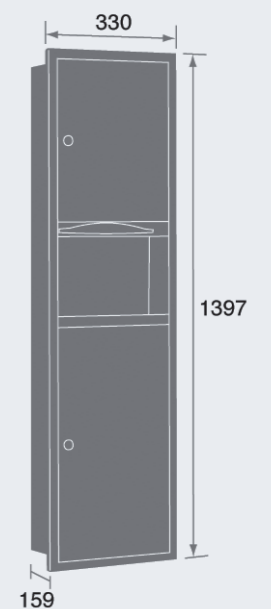
Paper towel dispenser and waste disposal **3128** **SSS**

Finishes : F24
Dispenses 360 C-fold or 470 multi-fold paper towels.
With 2 gallons (9 litres) removable waste container.
SUS304 stainless steel. Suggested mounting height
1711mm from floor to top of unit.
Wall Opening:
324mm wide, 673mm high, 108mm deep.



Paper towel dispenser and waste disposal **3129** **SSS**

Finishes : F24
Dispenses 600 C-fold or 800 multi-fold or 1100
single fold paper towels. Receptacle capacity
7 gallons (31.5 litres). SUS304 stainless steel.
Suggested mounting height 1497mm from floor
to top of unit.
Wall Opening:
292mm wide, 1359mm high, 159mm deep.



W09

Ash trays and cigarette bins

Flip over ashtray 3077 SSS

Surface mounting. Made of SUS304 stainless steel with bright finish. Flip over without removal from frame to permit ashes to be disposed easily.
42 x 115 x 100mm



Ashtray urn 3081 SSS

Surface mounting. Whole unit is made of SUS304 stainless steel with hairline finish. Flip top ashtray is operated by pushing down button on right side, lift hinged body to remove receptacle.
Size: 280mm wide, 150mm high, 140mm deep.



Cigarette bin CB.001 SSS

265 x 110 x 280mm



Cigarette bin CB.002 SSS

240 x 90 x 380mm



Toilet roll holders

Toilet roll holder 131SC SSS

Surface mounting. Made of SUS304 stainless steel with bright finish. Furnished with hood and chrome plated plastic roller.
120 x 95 x 100mm



Anti-vandal toilet roll holder 3114 PSS

Surface mounting. Whole unit is made of SUS304 stainless steel with bright finish. Designed with vandal and theft resistant locking device, constant roll tension and exclusive adjusting mechanism to accommodate rolls from 106mm to 115mm width.
70 x 150 x 110mm



Toilet roll holder 3039 PSS

Concealed screw mounting. Made of SUS304 stainless steel brackets with bright finish. Furnished with chrome plated plastic roller.
53 x 143 x 100mm



Washroom accessories

Facial tissue dispenser 3054 PCP

Surface mounting. Polished chrome plated cold roll steel with front panel, hinged to container. Capacity : 300 single sheets or 150 two ply sheets. 270 x 145 x 55mm



Bottle opener 3083 PSS

Exposed screw mounting. Whole unit is made of SUS304 stainless steel with bright finish. 70 x 52 x 25mm



Clothes line 3090 PSS

Made of SUS304 stainless steel with bright finish. Provides center locking knob to keep strain of cord when in used. Furnished with retainer plate mount and 3M nylon clothes line. 91mm DIA 31mm Projection.



Heavy duty recessed soap dish 3064 SSS

Recessed mounting. Made of heavy gauge SUS304 stainless steel with bright finish. Raised dimples on bottom of dish allow air to circulate under soap. Wall Opening : 160mm wide, 95mm high, 70mm deep. 181 x 127 x 67mm



Soap holder 3066 PCP

Concealed screw mounting. Whole unit is made of mazak with bright finish. 51x105x105mm



Toothbrush holder 3089 PSS

Concealed screw mounting. Has 60mm diameter hole in center of unit to hold tumbler. Accommodates six toothbrush holes, three on each side. Whole unit is made of SUS304 stainless steel with bright finish. 50 x 102 x 116mm



Utility shelf 3087.24 PSS

Concealed screw mounting. Made of SUS304 stainless steel brackets with bright finish. Furnished with one piece 127mm deep, 6mm high roll formed edge stainless steel shelf with bright finish. 50 x 610 x 160mm



Coat hooks

Single hook 5010

Overall 65mm
Projection 55mm ϕ
Upright 15mm
 ϕ 19mm



Buffered hook 5010B

SSS

Projection 78mm
Upright 15mm
 ϕ 19mm



Double hook 5010D

SSS

Overall 65mm
Projection 55mm ϕ
Upright 15mm
 ϕ 19mm



Buffered Double hook 5010DB

SSS

Projection 78mm
Upright 15mm
 ϕ 19mm



Hat and coat hook IHC

SSS PSS

Overall 68mm
Projection 1 63mm
Projection 2 30mm
Return 1 21mm
Return 2 17mm



Buffered hat and coat hook IHCB

SSS PSS

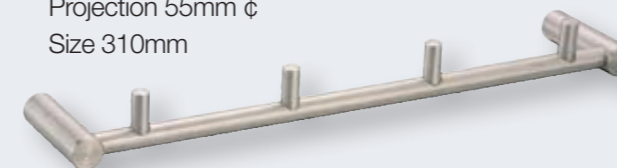
Overall 50mm
Projection 1 80mm
Projection 2 39mm
Return 1 26mm
Return 2 12mm



4 robe hook 5008

SSS

Projection 55mm ϕ
Size 310mm



Coat hook ICH

SSS PSS

Overall 65mm
Projection 29mm
Return 17mm



Apartment accessories

Single towel rail 5001 SSS

55 x 600mm



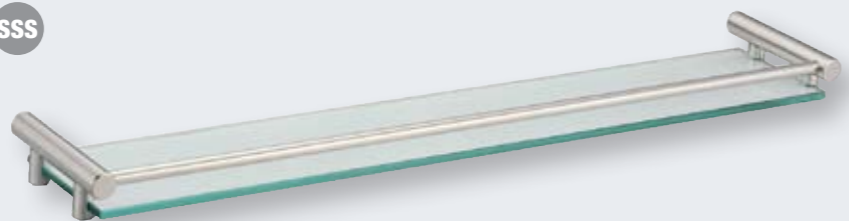
Double towel rail 5002 SSS

100 x 110 x 600mm



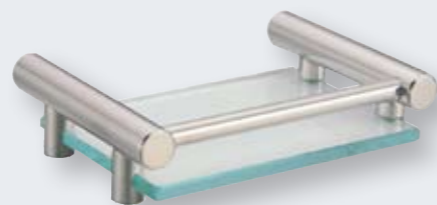
Glass toiletry shelf 5012 SSS

100 x 110 x 600mm



Soap holder 5019 SSS

110 x 160mm



Tumbler holder 5020 SSS

Holder	Tumbler
90 x 110 mm	110mm
	75mm ø
	50mm ø



Apartment accessories

Toilet roll holder 5014 SSS

Projection 55mm ϕ
Size 90 x 150mm



Spare toilet roll holder 5014SP SSS

Projection 60mm
Upright 34 x 120mm



Double toilet roll holder 5014E

Projection 55mm ϕ
Size 90 x 285mm



Toilet brush 5013 SSS

Holder
90 x 110 mm

Container
250mm
90mm ø
60mm ø



Towel ring 5007 SSS

Projection 55mm ϕ
Size 125 x 210mm





NEWSTAR

form and function for life

┌ Distributed by ┐

Newstar Door Controls Limited, Unit 2, Lion Business Park, Dering Way, Gravesend, Kent DA12 2DN.
Telephone: (01474) 353111 Facsimile: (01474) 353911 email: info@new-star.co.uk www.new-star.co.uk

All illustrations and dimensions given in this brochure are subject to change due to the continual refining and improving of the product range. Therefore we reserve the right to alter specification without prior notice. Any products purchased from this brochure are subject to our standard terms and conditions which are available upon request. March 2010.